

Health and Safety Induction Briefing

Health and Safety Directorate

For your safety and the safety of others, it is a condition of entry to this site that you take a few minutes to read this brochure

Mandatory site requirements:

- All visitors are required to report to reception on arrival.
- Observe all speed, parking and vehicular restrictions.
- Obey all safety signs and barricades.
- Violent, threatening or other unacceptable behaviour is not tolerated on NSW Department of Education premises.

No Go Zone for Vehicles at Willmot Public School

Extreme care is to be taken while driving on school property at all times. There is a protected area of the school called The Cumberland Plain which is located at the back of the school alongside A Block. Under no circumstances are vehicles allowed to drive through this area. If you have to drive around to the other side of the school follow the track that goes around the Cumberland plain along the back fence line.



Smoking

Smoking is not permitted on department premises.

Alcohol and Illegal Drugs

Alcohol and illegal drugs are not permitted.

Weapons

Weapons, including knives, are not permitted.

Dangerous Goods and Hazardous Substances

Visitors and contractors intending to bring dangerous goods on site must declare these at reception prior to entering the site.

Reporting Injuries/Hazards

All hazards and incidents must be reported to the main office.

- Injuries will be recorded in the *Register of Injuries*.
- First Aid treatment is available on site.

Local level induction

A local level induction will be provided upon entry to the school detailing site safety considerations including the age and nature of students.

Contractors

All **Property NSW** and **School Infrastructure NSW** contractors must:

- complete the **Facility Site Visit Log**
- advise the status of the job before leaving the site.

All **independent contractors** must in addition:

- produce all documentation in accordance with the local workplace safety procedures for independent contractors. Form 034 is located on the [Contractors, Volunteers and Visitor Safety page](#)
- sign visitors register

For all **other contractors**/visitors essential requirements necessary to deliver required service are checked and recorded at a local level, this may include:

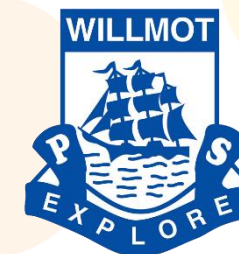
- Insurances and up to date qualifications
- Appropriate level of [Working With Children Check](#) (including volunteers).

Health and Safety Induction Briefing

NSW Department of Education

WELCOME TO

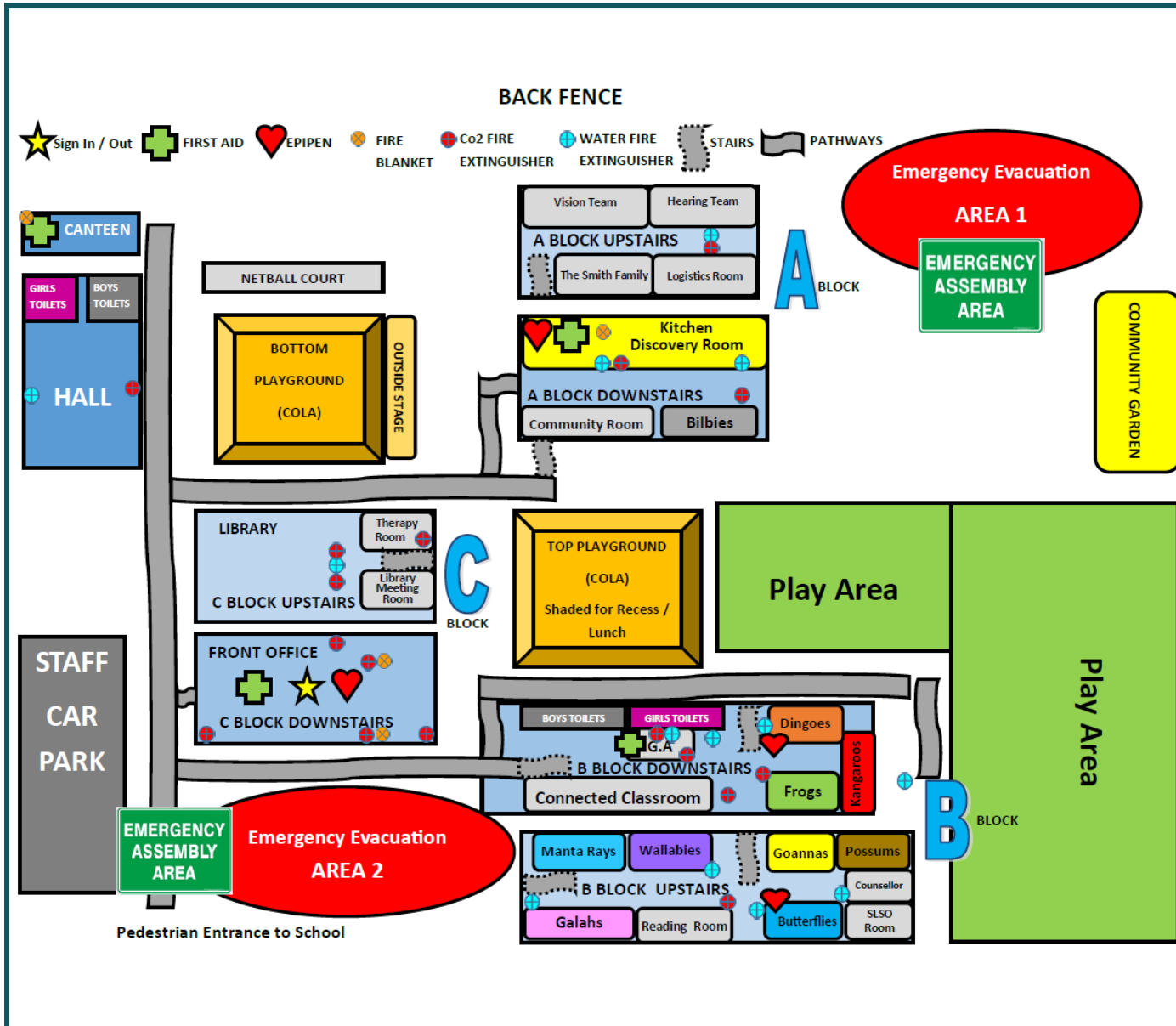
Willmot Public School



The New South Wales Department of Education is committed to the work health and safety of employees, students, contractors and visitors

Safety Induction Briefing

Emergency Procedures



Emergency Procedures

In a life threatening emergency, or when Police, Fire, or Ambulance Services are required.

DIAL 000 immediately

For all emergencies, injuries, hazards or near misses, contact the front office on: **9628 0222**

Evacuation: Continuous Ascending Siren

Proceed to the safest, closest assembly point located on the map. Follow warden instructions.

Lockdown: Intermittent Descending Siren

Proceed to your closest secure point (closest classroom, hall, office, library), follow school staff instructions, or if alone lock the doors (if possible) and remain silent until the chief warden gives the all clear.

Lockout: Intermittent Descending Siren

Entry to and from the site will be closed. Follow the instructions of the chief warden until advised that you can continue as usual.

The First Aid Officer is located in the front Office and can be contacted on Ext: 101.

The Site Contact can also be located in the front Office.